

# MALI

## CCF as a HRH coordination mechanism in Mali

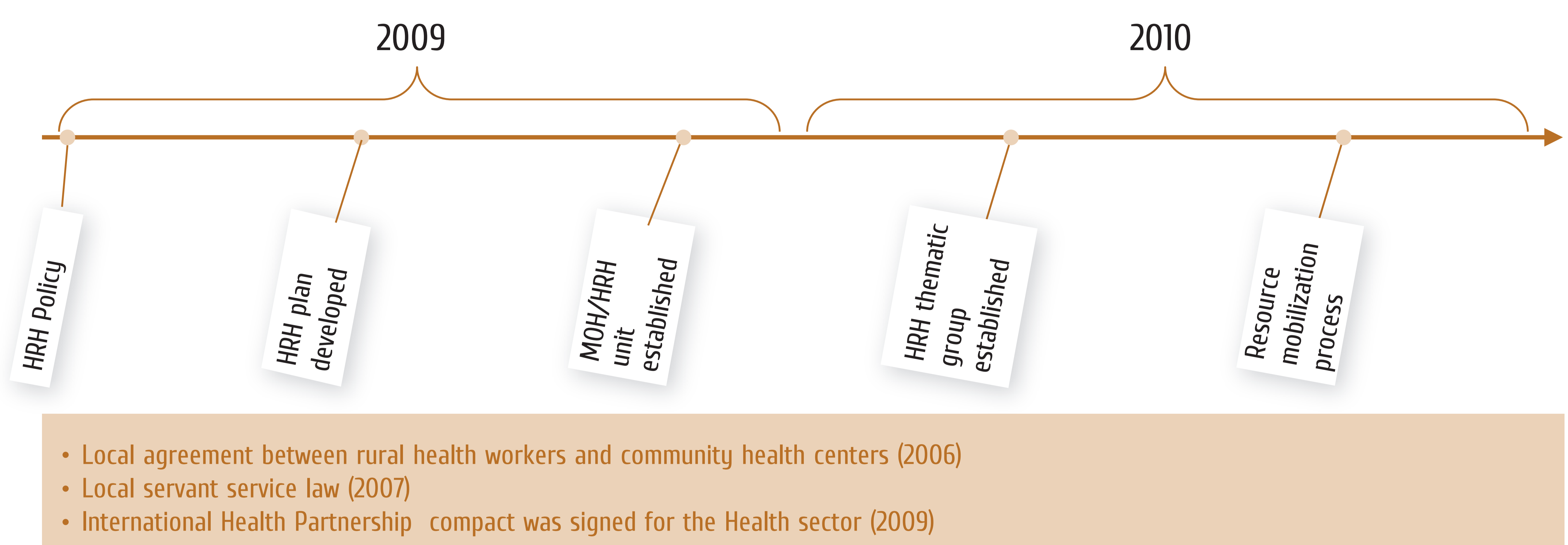
### Health Workers Situation

- Doctors: 1 / 10 389
- Nurses: 1 / 3365
- Midwives: 1 / 21 615
- 70% of doctors are civil servants;
- 31% of General Practitioners are working in the rural areas;
- 53% of Paramedical Workers are in the rural areas.

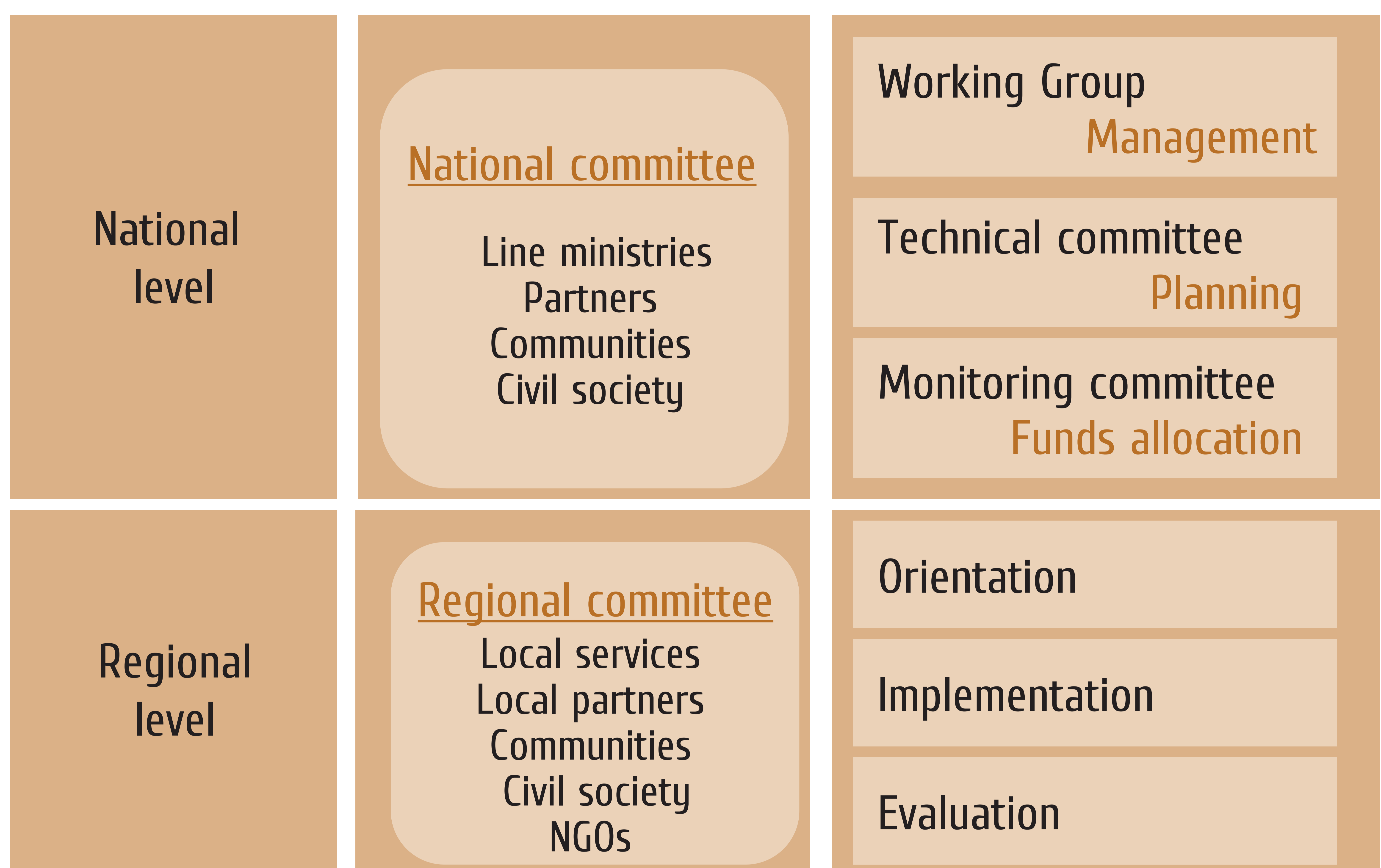
### Necessity for Better Coordination

- Strengthening leadership of the Ministry of Health on the HRH;
- Implementation of the HRH plan with all key stakeholders involvement;
- Involvement of key stakeholders in the resources mobilization efforts;
- Achieving the health related Millennium Development Goals through improving HRH required for essential health services.

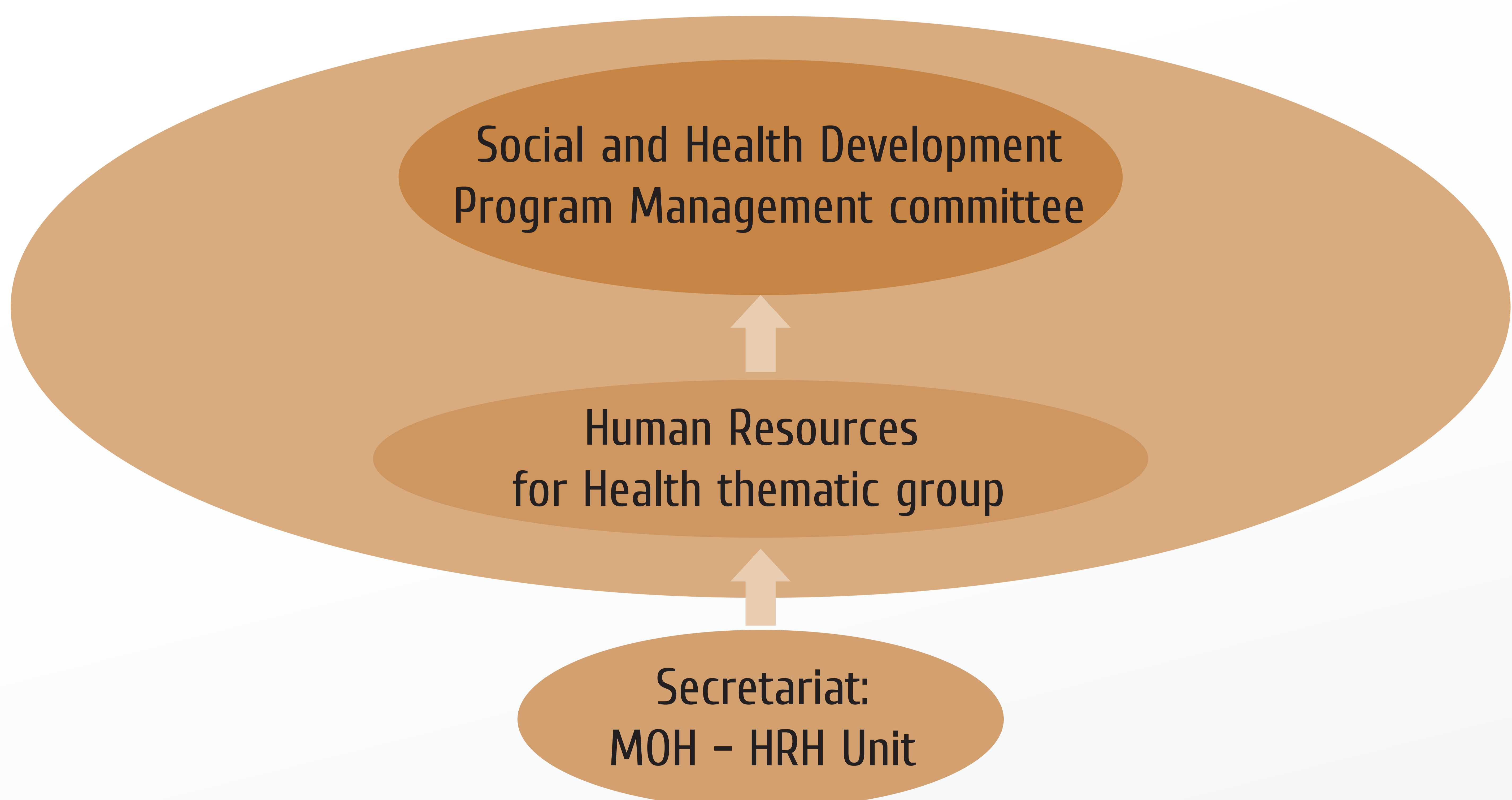
### What has been done so far?



### Coordination mechanism



### Human Resources for Health: Coordination Structure



### HRH thematic group members

- MOH and other related ministries;
- Private sector;
- NGO;
- Professional association;
- Partners;
- Champions and Community leaders.

### Achievements

MOH-HRH unit leadership reinforced

Regular meetings with the stakeholders

Implementation of the HRH plan has started with involvement of key stakeholders



global health workforce alliance